



0. SCHIZOPHRENIA: WHAT IS IT? - Story Preface

1. SCHIZOPHRENIA: WHAT IS IT?

2. PHYSICAL IMPAIRMENTS

3. THE WORLD OF JOHN NASH

4. A GENIUS AT WORK

5. DESCENT INTO MADNESS

6. ALL OVER FOR HIM?

7. A LIFE RECOVERED

8. ABEL PRIZE and the DEATH of JOHN NASH

People who have schizophrenia often report hearing voices in their head. It is an incredibly difficult situation for patients and their families. Image online via James Madison University.

For most people who have it, schizophrenia is a lifelong condition. Statistics show about 1 in 100 people could develop it.

According to the National Institute of Mental Health, more than 2 million Americans suffer from schizophrenia in any given year. Of those people, only one in five recovers completely. Remission, when it occurs, follows a lengthy treatment time.

What are the symptoms of this sometimes inherited condition and at what age, typically, do they occur? Onset (which is not always quickly recognized or treated) often begins in the late teens or early twenties. Symptoms impair the patient's ability to function:

Symptoms include hallucinations, delusions, disordered thinking, and social withdrawal. Most people with schizophrenia continue to suffer chronically or episodically throughout their lives. Even between bouts of active illness, lost opportunities for careers and relationships, stigma, residual symptoms, and medication side effects often plague those with the illness. One of every 10 people with schizophrenia eventually commits suicide. (Fact Sheet from the National Institute of Mental Health.)

See Alignments to State and Common Core standards for this story online at:

<http://www.awesomestories.com/asset/AcademicAlignment/SCHIZOPHRENIA-WHAT-IS-IT-A-Beautiful-Mind>

See Learning Tasks for this story online at:

<http://www.awesomestories.com/asset/AcademicActivities/SCHIZOPHRENIA-WHAT-IS-IT-A-Beautiful-Mind>

Media Stream

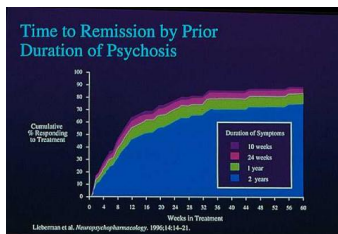


Chart: Time to Remission by Prior Duration of Psychosis

Chart online, courtesy National Institute of Mental Health.

PD

View this asset at:

<http://www.awesomestories.com/asset/view/Chart-Time-to-Remission-by-Prior-Duration-of-Psychosis>

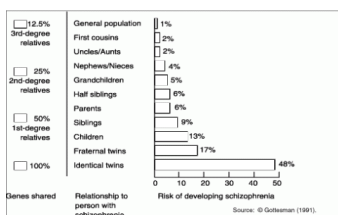


Chart: Risk of Developing Schizophrenia

Image online, courtesy the schizophrenia.com website.

View this asset at:

<http://www.awesomestories.com/asset/view/Chart-Risk-of-Developing-Schizophrenia>

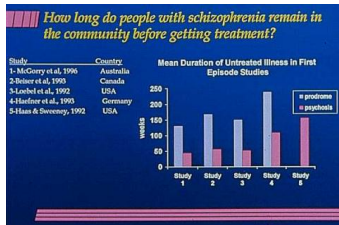


Chart: Length of Time Before Treatment

Image online, courtesy [National Institute of Mental Health](http://www.nimh.nih.gov).

PD

View this asset at:

<http://www.awesomestories.com/asset/view/Chart-Length-of-Time-Before-Treatment>



SCHIZOPHRENIA: WHAT IS IT?

View this asset at: <http://www.awesomestories.com/asset/view/SCHIZOPHRENIA-WHAT-IS-IT->