

0. QUESTIONS - Story Preface

1. HAPPIER TIMES

2. TO DALLAS

3. LEE HARVEY OSWALD

4. THE MOTORCADE

5. THE ASSASSINATION

6. DEATH OF THE PRESIDENT

7. QUESTIONS

8. BOOK DEPOSITORY EVIDENCE

9. FATAL BULLETS

10. MURDER OF OFFICER TIPPIT

11. OSWALD'S ARREST

12. RUBY KILLS OSWALD

13. THE PRESIDENT'S FUNERAL



Even as doctors at Parkland Hospital worked incredibly hard, trying to save President Kennedy's life, people began to question who was responsible for his assassination. This image, provided by Dr. Robert McClelland—one of the President's physicians—depicts the interior of Parkland's Trauma Room One. Image online via *The Dallas Morning News*.

As police began their investigation into the assassination of President Kennedy, they quickly went to the Book Depository where they found a great deal of evidence (later used by the Warren Commission). It appeared that an assassin had, in fact, fired at the President's motorcade from a sixth-floor window.

The rifle was still there, "hidden" behind book boxes. Three spent shells were on the floor, near the window. A live round was still in the chamber of the high-powered rifle with its misaligned scope. And ... the alleged killer left tell-tale prints, including a portion of his right palm on a cardboard container, plus a latent print on the rifle's magazine housing. (See the circled section at the bottom of Warren Commission Exhibit 629.)

Investigators interviewed 216 Dealey Plaza witnesses. Hundreds more testified in the Warren Commission hearings. Within a year, the Commission found that Lee Harvey Oswald, acting alone, had assassinated President Kennedy.

Those official conclusions, however, were never universally accepted. Too many unanswered questions remained. Too many "findings" did not match the facts.

For example: What about evidence from eyewitnesses who heard shots coming from the grassy knoll area? If true, an assassin would have been in front of the President's car as well as behind it.

What about the Zapruder film which shows the effects of the fatal bullet? If the President were only shot from behind, how does one explain the movement of his head at the moment of impact?

Answers, from those supporting the "lone assassin" theory, differed greatly from those with an opposite point of view. Still others believe there was a coverup of the evidence.

Scholarship continues in an effort to get to the truth. The House Select Committee on Assassinations (created as a result of continued pressure by the American people) concluded there was likely a conspiracy to kill the President. They also found "a high probability" that a second gunman fired at him, although the committee believed that Oswald fired the fatal shot.

But whether Oswald acted alone, in concert with others, or was framed does not diminish the importance of the physical evidence that was gathered in the case. And that evidence, maintained by the U.S. National Archives, allows the general public to see today what was, for decades, only available to experts and scholars.

See [Alignments to State and Common Core standards for this story online at:](http://www.awesomestories.com/asset/AcademicAlignment/QUESTIONS-Assassination-of-John-F.-Kennedy)

<http://www.awesomestories.com/asset/AcademicAlignment/QUESTIONS-Assassination-of-John-F.-Kennedy>

See [Learning Tasks for this story online at:](http://www.awesomestories.com/asset/AcademicActivities/QUESTIONS-Assassination-of-John-F.-Kennedy)

<http://www.awesomestories.com/asset/AcademicActivities/QUESTIONS-Assassination-of-John-F.-Kennedy>



Trauma Room One at Parkland Hospital

Doctors trying to save the life of JFK worked on the President in Parkland Hospital's Trauma Room One.

This image—provided by Dr. Robert McClelland, one of the physicians who attended America's fallen leader—depicts the interior of Trauma Room One.

Click on the image for a better view.

Photo of Parkland Hospital's Trauma Room One by Dr. Robert Robert McClelland; online via "The Dallas Morning News."

View this asset at:

<http://www.awesomestories.com/asset/view/Trauma-Room-One-at-Parkland-Hospital>

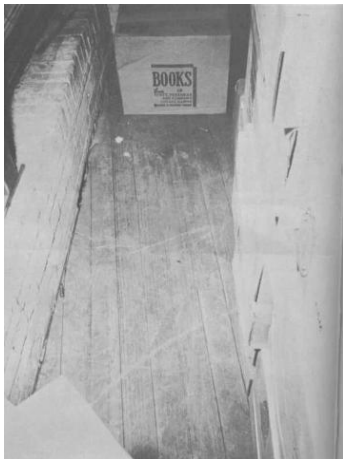


Clutter on the Sixth Floor of the Book Depository

Warren Commission Exhibit 719. U.S. National Archives.

View this asset at:

<http://www.awesomestories.com/asset/view/Clutter-on-the-Sixth-Floor-of-the-Book-Depository>



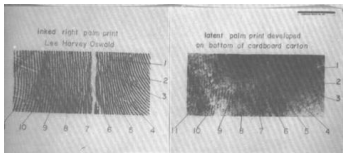
Claimed Assassin Shells Near the Sixth-Floor Window

Warren Commission Exhibit 716. U.S. National Archives.

PD

View this asset at:

<http://www.awesomestories.com/asset/view/Claimed-Assassin-Shells-Near-the-Sixth-Floor-Window>

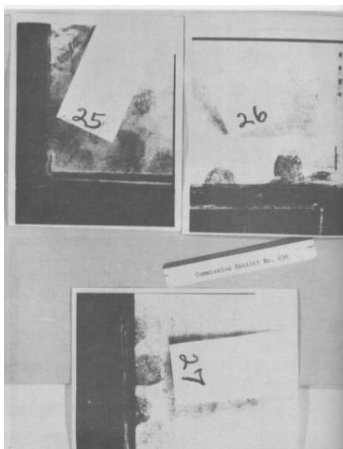


Palm Print at Scene and Oswald's Palm Print

Warren Commission Exhibit 652. U.S. National Archives.

View this asset at:

<http://www.awesomestories.com/asset/view/Palm-Print-at-Scene-and-Oswald-s-Palm-Print>



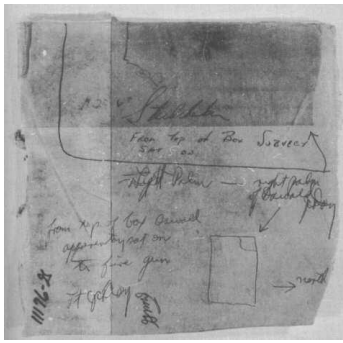
Prints at the Alleged Scene of the Shooting

U.S. National Archives.

PD

View this asset at:

<http://www.awesomestories.com/asset/view/Prints-at-the-Alleged-Scene-of-the-Shooting>



Cardboard Box Allegedly Used as a Seat by Oswald

Warren Commission Exhibit 649. U.S. National Archives.

PD

View this asset at:

<http://www.awesomestories.com/asset/view/Cardboard-Box-Allegedly-Used-as-a-Seat-by-Oswald>



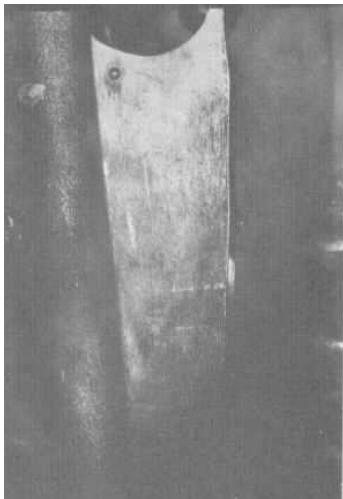
Cardboard Container with Palm Print

Warren Commission Exhibit 648. U.S. National Archives.

PD

View this asset at:

<http://www.awesomestories.com/asset/view/Cardboard-Container-with-Palm-Print>



Latent Palm Print on Magazine of Rifle

Warren Commission Exhibit 720. U.S. National Archives.

PD

View this asset at:

<http://www.awesomestories.com/asset/view/Latent-Palm-Print-on-Magazine-of-Rifle>

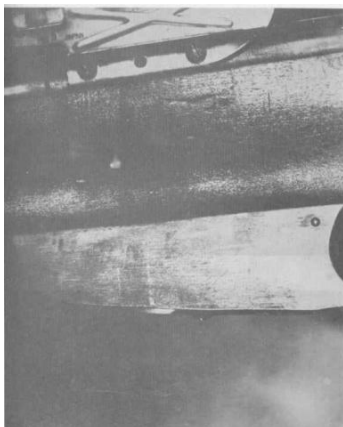


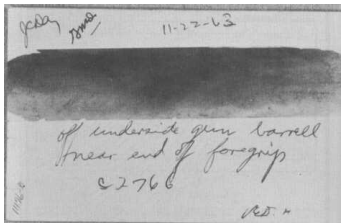
Photo of Latent Palm Print on Magazine Housing

U.S. National Archives.

PD

View this asset at:

<http://www.awesomestories.com/asset/view/Photo-of-Latent-Palm-Print-on-Magazine-Housing>

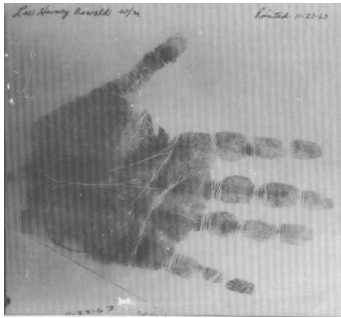


JFK Assassination - Latent Palm Print on the Rifle Barrel

Warren Commission Exhibit 637. U.S. National Archives.

View this asset at:

<http://www.awesomestories.com/asset/view/JFK-Assassination-Latent-Palm-Print-on-the-Rifle-Barrel>



Oswald Right Palm Print

U.S. National Archives.

PD

View this asset at: <http://www.awesomestories.com/asset/view/Oswald-Right-Palm-Print>